

Seismic Analysis of a G+11 Storey Building Considering Seismic Load As Per Live Data Using ETABS

Ravindra Prajapati¹, Murlidhar Chourasia²

P. G. Scholar¹, Assistant Professor²

Department Of Civil Engineering, Infinity College Sagar, Madhya Pradesh, India

ARTICLE INFO

Article History:

Accepted: 01 Jan 2024

Published: 24 Jan 2024

Publication Issue

Volume 8, Issue 1

January-February-2024

Page Number

119-127

ABSTRACT

Buildings must be able to safely withstand any significant ground motions that could happen during construction or regular operation in order to be considered earthquake resistant. The impacts that ground motions have on structural reactions, however, are special. The time-history analysis is the analytical method that is most accurate for structures that are subjected to severe ground vibrations.

To illustrate the overall effects of the RCC frame building, a model was made. In seismic zone II, four G+11 concrete planar frames with four bays in each of the X and Y directions were built in accordance with Indian codes. Each frame is subjected to five unique loading situations. Pushover analysis is used to evaluate the different frames after they have been created with varied elevational irregularities but the same loading conditions. The outcomes of each frame are compared. The outcome consists of a pushover curve between base shear and displacement as well as capacity spectrum, which are performed and evaluated for each frame. This study used STAAD.Pro v8i to analyse the non-linear response of RCC frames under stress with the aim of determining the relative weights of various parameters in the non-linear analysis of RCC frames in seismic zone II, taking into account comparisons of the case with bare frame and infill wall.

Keywords: RCC frame, Irregular building, FEMA hinge, capacity spectrum, pushover analysis, seismic reaction.

I. INTRODUCTION

Modern high rise building construction began to address a variety of objectives, including the need to accommodate a growing population, the high cost of

land, and even to demonstrate the state of the economy in the case of corporate structures. Earlier, these structures were regular in shape, but with modern technology and materials, it is now feasible to build structures with a variety of plans, shapes, and

sizes. Due to their practical and aesthetically pleasing qualities, these atypical structures are quite prevalent all over the world. Different story heights, excess mass in one or more storeys that may be caused by the presence of public meeting areas like gyms, halls, etc., abrupt changes in stiffness made in accordance with architectural considerations, and other factors can all contribute to irregularity. The majority of apartments favour soft-storey structures with sizable parking areas. Irregular buildings are those that have discontinuities in their bulk and rigidity in their layout or elevation. Performance level describes the state of the building's damage, providing information on whether it is safe for occupants to occupy it or how much repair work will be required, as well as its serviceability following an earthquake. Different design requirements are needed at various performance levels. Therefore, it is impossible for a single design parameter to achieve all performance goals. Even though these performance goals could place competing demands on stiffness and strength, one shouldn't sacrifice life safety.

II. PUSHOVER ANALYSIS

Pushover analysis is a technique by which a computer model of the building is subjected to a lateral load of a certain shape (i.e., inverted triangular or uniform). The intensity of the lateral load is slowly increased and the sequence of cracks, yielding, plastic hinge formation, and failure of various structural components is recorded. Pushover analysis can provide a significant insight into the weak links in seismic performance of a structure. Pushover analysis is a simplified nonlinear analysis whose central focus is generation of the pushover curve or capacity curve. This represents the lateral displacement as a function of force applied to the structure. This capacity curve is representation of the structures ability to resist the seismic demand. To generate the capacity curve, the structure is pushed in a representative lateral load

pattern which is applied monotonically while the gravity loads are in place. Any type of representative lateral load pattern can be defined but the load pattern similar to first mode shape amplitude of the structure is the most commonly used to determine the capacity. The A predefined lateral load pattern which is distributed along the building height is then applied. The lateral forces are increased until some members yield. The structural model is modified to account for the reduced stiffness of yielded members and lateral forces are again increased until additional members yield. The process is continued until a control displacement at the top of building reaches a certain level of deformation or structure becomes unstable. The roof displacement is plotted with base shear to get the global capacity curve.

A pushover analysis consists of two parts. First, the pushover or "Capacity Curve" is determined through application of incremental static loads to an inelastic model of the structure. Second, this curve is used with some other "Demand" tool to determine the target displacement.

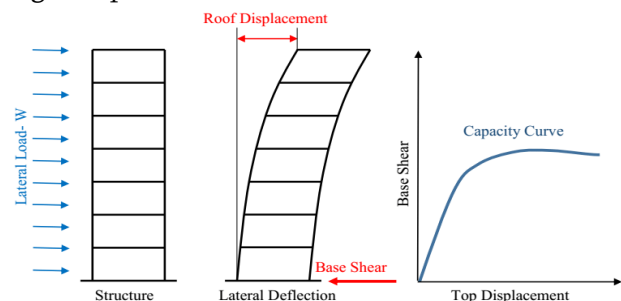


Fig 1 Capacity curve

STAAD.PRO is general-purpose civil-engineering software ideal for the analysis and design of any type of structural system. Basic and advanced systems, ranging from 2D to 3D, of simple geometry to complex, may be modeled, analyzed, designed, and optimized using a practical and intuitive object-based modeling environment that simplifies and streamlines the engineering process.

Integrated modeling templates, code-based loading assignments, advanced analysis options, design-

optimization procedures, and customizable output reports all coordinate across a powerful platform to make STAAD.PRO especially useful for practicing professionals.

Utilizing STAAD Expert, structural specialists can configuration any sort of construction, and later offer the synchronized model information among the whole plan group. It ensures that structures and designs for steel, concrete, timber, aluminum, and cold-formed steel projects, regardless of their complexity, are completed on time and within budget. By eliminating the time-consuming and laborious manual procedures, STAAD Pro helps structural engineers automate their work. On virtual platforms, it enables civil engineers to analyze and design a variety of structures. STAAD pro is extensively utilized by consultancies, various departments of construction companies, and government agencies.

Objectives of the Research

- To study the effect of vertical geometric irregularity in G+11 3D buildings.
- To analyse the buildings using Pushover Analysis.
- To calculate the maximum Monitored Displacement of the different buildings.
- To calculate the maximum Base Shear at maximum Monitored Displacement and performance point.
- To analyse these RCC buildings in seismic zone II.
- Comparison of the different parameters of different models considering displacement as common.

III. LITERATURE REVIEW

D J Zavala et.al (2022) author analyzed the influence of the stiffness irregularity and the p-delta effect on the structural behavior of a reinforced concrete building. The main objective was to determine the impact of the stiffness irregularity and the p-delta

effect on the structural behavior in regular and irregular buildings. The linear dynamic analysis procedure was performed in order to determine the structural response in terms of drifts, shear force and moments per floor. A comparative analysis of the responses from the linear and nonlinear analysis was carried out to determine the percentage variation of the results.

When analyzing the structures that consider the stiffness irregularity and the p-delta effect, variations of up to 16.50%, 11.00% and 14.00% was obtained in drifts, shear force and moments per floor respectively, which are considerable values. When the p-delta effect was considered in structures with the presence of stiffness irregularity, there was a variation in stiffness of up to 59.85%. Conclusion stated that p-delta effect produces a greater degradation of the overall stiffness of the structure.

Thokala Brahmendra Rao et.al (2022) in the research paper, p- delta (P- Δ) effect on high- rise building was investigated for the analysis of G+29 RCC framed building and models were done by ETABS2016. Seismic and wind loads were applied to model as per IS-1893 (2002) and IS-875 (PART-III). The displacements, storey drifts, Bending Moments and Shear Forces are compared to the different models by considering with and without P-delta effect and by providing shear walls at different locations.

Results stated that displacements of conventional building models (without p-delta) is less when compare to building with p- delta. The storey drifts in building models with p-delta effect are more when comparing with models analysed using equivalent static analysis method(without p-delta effect). The bending moment (BM) in shearwall 18% increases after p-delta effect. Shearwall placed at centre of frame shows more effectiveness when comparing with shear wall placed at corner and without shear wall of the structure.

IV. METHODOLOGY

General

This research is focused towards presenting the comparative analysis of a G+11 story structure considering seismic zones using pushover analysis to understand the behaviour of the structure when dead load, live load and seismic loads are applied in the case study. The modelling and analysis is performed using analytical application STAAD.Pro v8i. Entire procedure for the modelling and analysis is stated below.

Steps of the Modelling and Analysis

Step 1: Research paper from different authors was summarized in this section who have focused towards analyzing multi storey high rise structures considering seismic loads with different zones and soil condition

Step 2: In order to initiate the modelling of the case study, firstly their's need to initialize the model on the basis of defining display units on metric SI on region India as STAAD.Pro supports the building codes of different nations. The steel code was considered as per IS 800:2007 and concrete design code as per IS 456:2000.

Step 3: STAAD.Pro provides the option of modelling the structure with an easy option of Quick Template where the grids can be defined in X, Y and Z direction. Here in this case, 6 bays in considered in both X and Y direction with a constant spacing of 3.5m making the model symmetrical in nature. G+11 storey structure is considered with typical storey height of 3.2 m and Bottom storey height of 2 m.

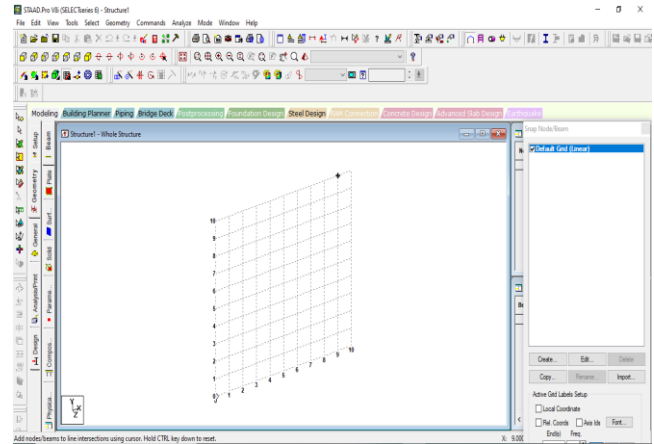


Fig 2 New Model Quick Template

Step 4: Next step is to define the material properties of concrete and steel. Here in this case study, M30 concrete and rebar HYSD 550 is considered and its predefined properties are available in the STAAD.Pro application considering section properties for Beam, Column and Slab.

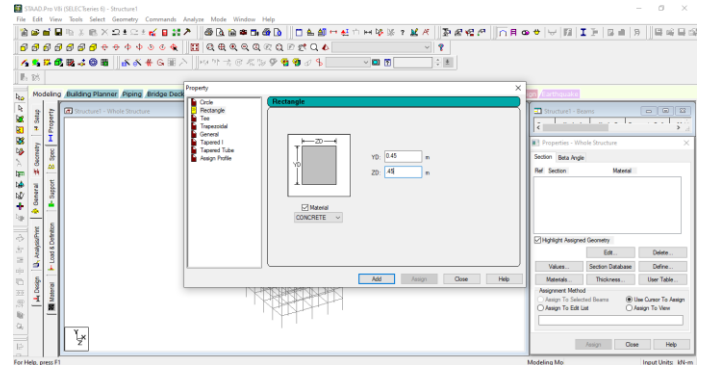


Fig 3 Defining Properties of Column

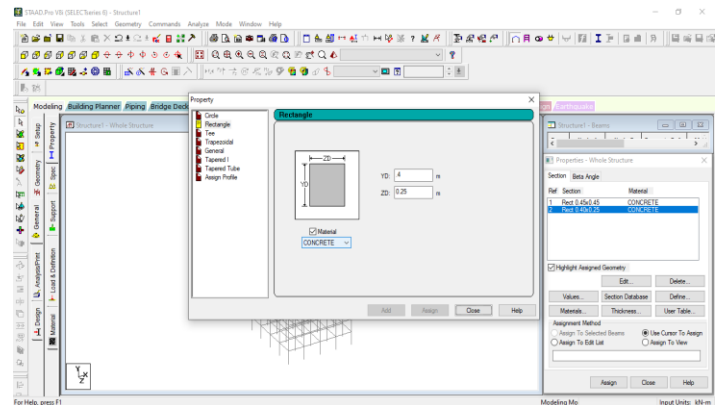


Fig 4 Defining Properties of Beam

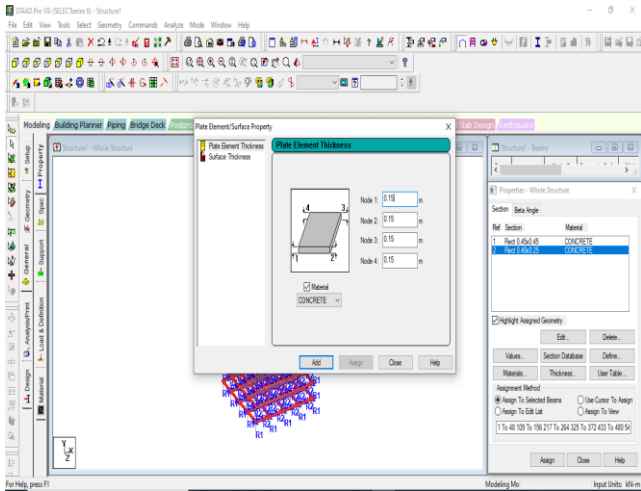


Fig 5 Defining Slab Properties

Step 5: Assigning Fixed Support at bottom of the structure in X, Y and Z direction in both the considered cases.

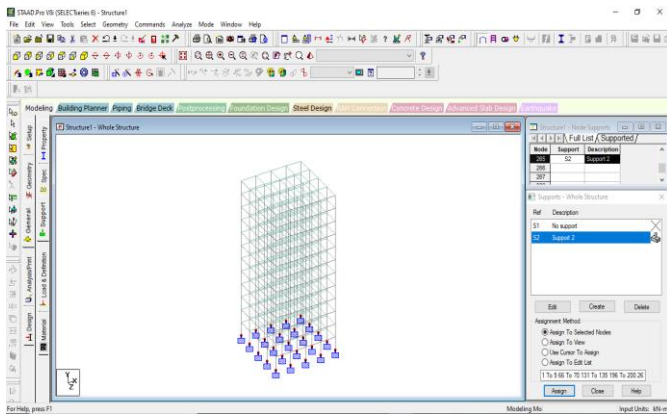


Fig 6 Assigning Fixed Support

Step 7: Defining Load cases for dead load, live load and seismic analysis for X and Y Direction.

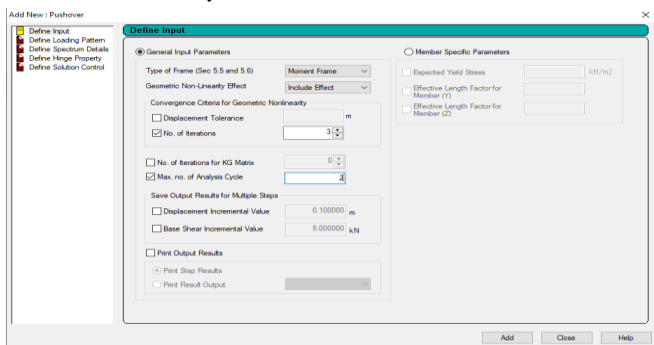


Fig 7 Defining Input

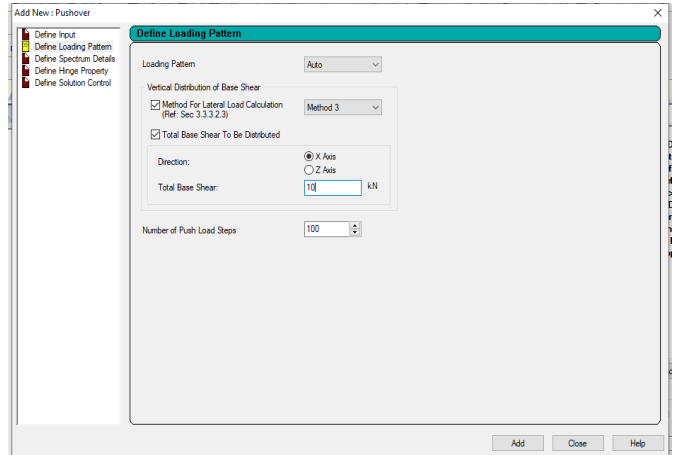


Fig 8 Defining Loading Pattern

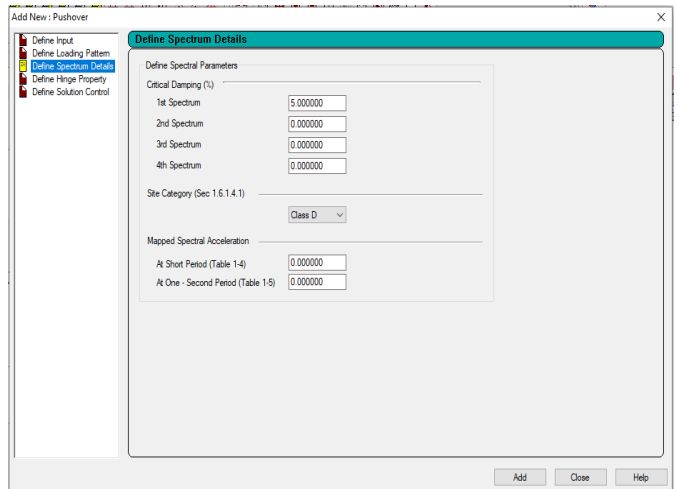


Fig 9 Defining Response Spectrum Analysis

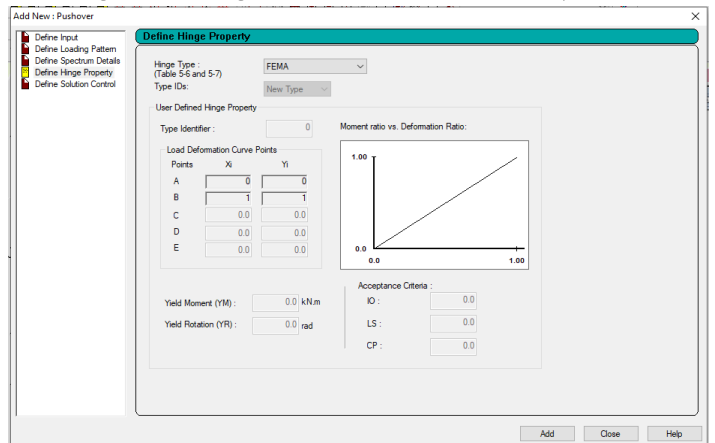


Fig 10 Defining Hinge Property

Step 8 Defining Seismic Loading as per IS 1893: 2016 Part I.

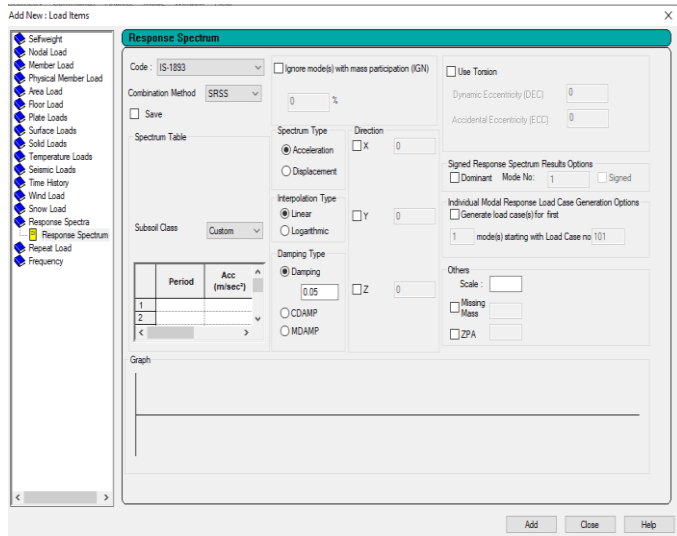


Fig 11 Response Spectrum as per IS 1893-2016

Step 10: Analyzing the structure for dead load, stress analysis and displacement.

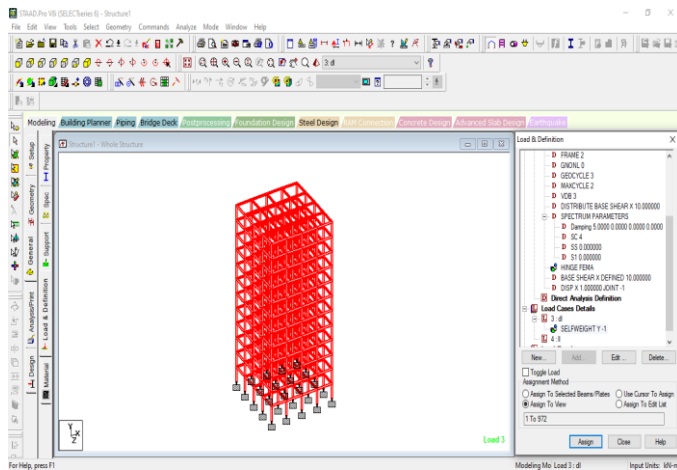


Fig 12 Stress Analysis for Dead Load

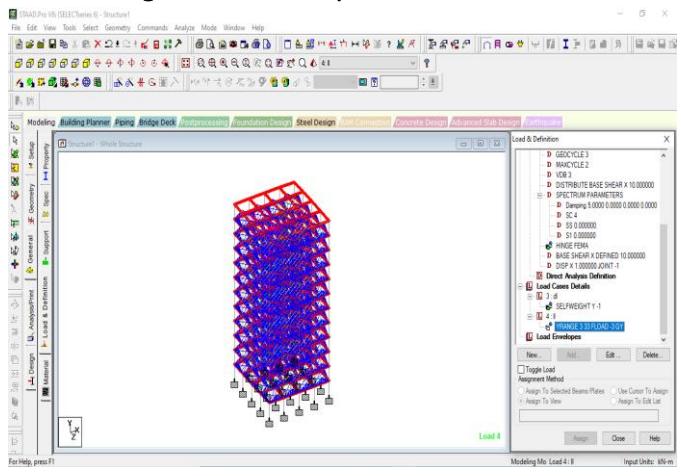


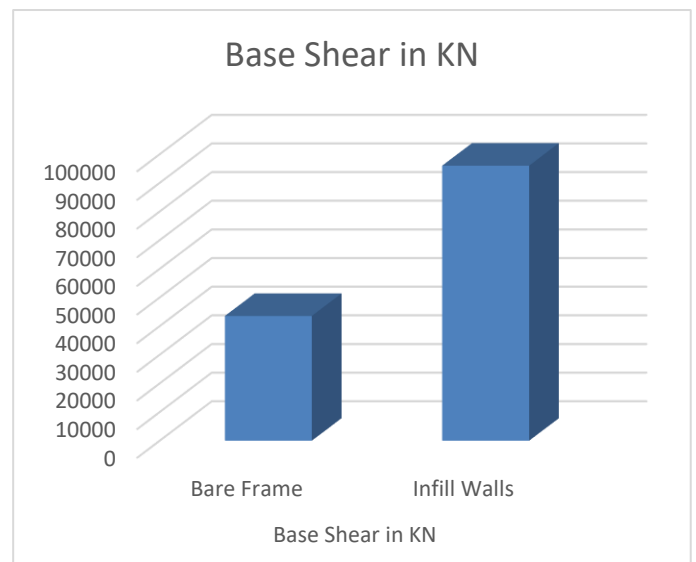
Fig 13 Storey Analysis with Live Load

Table 1 Geometrical Specifications of the Structure

Geometrical Specification	
Particulars of Item	Properties
Number of Storey	G+11
Typical Storey height	3.2m
Bottom Storey Height	3.2m
Floor Diaphragm	Rigid
Number of Grid Lines in X-direction	4
Number of Grid Lines in Y-direction	4
Beam Size	400x250mm
Beam Shape	Rectangular
Column Size	450x450mm
Column Shape	Rectangular
Slab Depth	150mm
Slab Type	Thin Shell

V. RESULTS AND DISCUSSION

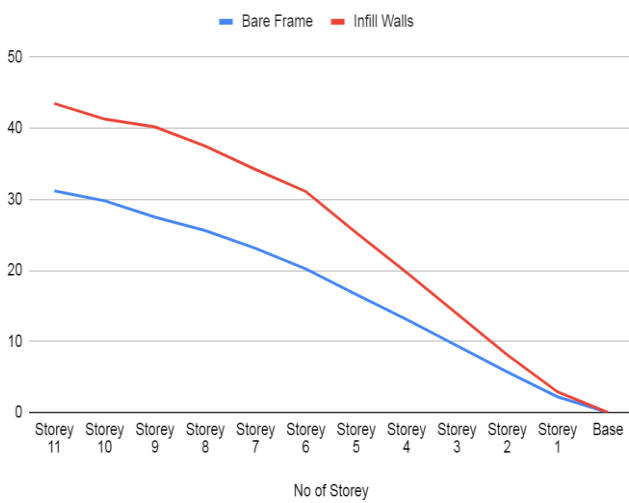
BASE SHEAR



Base Shear in kN

Inference- Base shear is a calculation of the greatest lateral stress that seismic activity is likely to exert on the foundation of the structure. It is determined using the lateral force formulae for the seismic zone, soil type, and building code. Base shear is the maximum expected lateral force that will occur due to seismic ground acceleration at the base of the structure. The base shear was found to be 96004.672 kN for Infill structure whereas 43533.575 kN for bare frame structure.

DISPLACEMENT IN mm.



Displacement in mm

Inference- Story displacement is the lateral displacement of the story relative to the base. The lateral force-resisting system can limit the excessive lateral displacement of the building. The acceptance lateral displacement limit for wind load case could be taken as H/500 (some may take H/400). Displacement was minimum at the bottom of the structure but maximum comparison between the results were visible by 8.2% at the top of the structure in bare frame structure and infill wall.

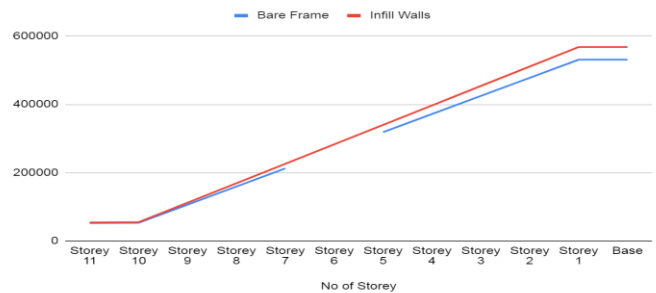
STOREY SHEAR IN KN



Storey Shear in kN

Inference- Storey shear was the lateral force acting on a storey due to the forces such as seismic and wind force. Buildings having lesser stiffness attract lesser storey shear and vice versa. Storey shear used to decrease from bottom to top of the structure. The storey shear was found to be 2.3% on higher side from the structure with infill wall when compared to bare frame structure.

STOREY MOMENT IN KN-m



Storey Moment in kN -m

Inference- Variation of 5.2 % variation was visible for Structure with infill wall and bare frame.

VI. CONCLUSION AND FUTURE SCOPE

Base Shear

Base shear is a calculation of the greatest lateral stress that seismic activity is likely to exert on the foundation of the structure. It is determined using the lateral force formulae for the seismic zone, soil type, and building code. Base shear is the maximum expected lateral force that will occur due to seismic ground acceleration at the base of the structure. The

base shear was found to be 96004.672 kN for Infill structure whereas 43533.575 kN for bare frame structure.

Storey Displacement

Story displacement is the lateral displacement of the story relative to the base. The lateral force-resisting system can limit the excessive lateral displacement of the building. The acceptance lateral displacement limit for wind load case could be taken as $H/500$ (some may take $H/400$). Displacement was minimum at the bottom of the structure but maximum comparison between the results were visible by 8.2% at the top of the structure in bare frame structure and infill wall.

Storey Shear

Storey shear was the lateral force acting on a storey due to the forces such as seismic and wind force. Buildings having lesser stiffness attract lesser storey shear and vice versa. Storey shear used to decrease from bottom to top of the structure. The storey shear was found to be 2.3% on higher side from the structure with infill wall when compared to bare frame structure.

Storey Moment

Variation of 5.2 % variation was visible for Structure with infill wall and bare frame. As number of storey increases P-delta effect becomes more important. P-delta effect is only observed in some of the beams and columns (Exterior columns and their adjacent beams) in some load cases. If these load cases are governing load cases for design of member, it is considerable.

Modal Period

The natural time period is found for building with pdelta effect where natural period of a building is simply a time taken by it to undergo one complete cycle of oscillation. The natural period is one of the properties or building which is controlled by mass and stiffness. The results were evaluated till mode 6 where the maximum results were visible for infill structure at mode 1.

Iterative P-delta analysis method is used. Building is by default analyzed for 10 numbers of iterations in ETAB. But the same results are observed for single iteration also. So there is no change in results by increasing the iterations. As the cross sections of members increases stiffness of a structure also increases.

FUTURE SCOPE

Further work and studies on the P-delta effect on high-rise buildings is highly recommended to eliminate the risk of failures of high-rise buildings. Below are some of the recommendations for further studies:

- In this work the stiffness of structure is increased by the concept "The more uniform the internal force distribution, the stiffer the structure" further study can be carried out for the remaining concepts for achieving economical design.
- In this work nonlinear behavior of building was studied by static pushover analysis method further study can be carried out by using nonlinear dynamic analysis.

REFERENCES

1. Pushparaj J. Dhawale and G. N. Narule, [Analysis of P-Delta Effect on High Rise Buildings], International Journal of Engineering Research and General Science Volume 4, Issue 4, July-August, 2016 ISSN 2091-2730.
2. PhaniKumar.V, M.Deepthi, Saikiran K and R.B.N. Santhosh, [Behavior of P-Delta Effect in High- Rise Buildings With and Without Shear Wall], International Journal of Recent Technology and Engineering (IJRTE) ISSN: 2277-3878 (Online), Volume-8 Issue-2, July 2019.

3. Drisya S Kumar and Margaret Abraham, [Analysis of High Rise Building for P-Delta Effect using ETABS], International Journal of Applied Engineering Research ISSN 0973-4562 Volume 14, Number 12, 2019 (Special Issue).
4. Dharanedharan K S and Sivakumar C G, [Significance Of P-Delta Effects In High Rise RC Structure In Various Seismic Zones], International Journal of Aquatic Science ISSN: 2008-8019 Vol 12, Issue 02, 2021.
5. T. Nagarjuna and R. B. N. Santhosh, [An Evaluation of P-Delta Effect in High-Rise Building], International Journal of Science and Research (IJSR), Volume 7 Issue 6, June 2018.
6. Parsa Heydarpour, Pedro F. Silva and Rigoberto Burgueño, [An Investigation on the Pushover Analysis Based Methods for Compensating the P-Delta Effects], International Journal of Structural and Civil Engineering Research Vol. 7, No. 1, February 2018.
7. Thokala Brahmendra Rao, Dr M Janardhan and M.Venkata Narasaiah, [Study of P-Delta Effect in High- Rise Buildings with and without Shear Wall], INTERNATIONAL JOURNAL OF INNOVATIVE RESEARCH IN TECHNOLOGY, September 2022| IJIRT | Volume 9 Issue 4 | ISSN: 2349-6002.
8. Dhangar Laxmi Balappa and Venu Malagavelli, [Pushover Analysis of High Rise Buildings with and without Bracings], International Journal of Civil Engineering and Technology (IJCIET) Volume 9, Issue 9, September 2018, pp. 759–767.
9. Pavithra.S and Jegidha.K.J, [Analysis and Design of Tall Buildings using ETABS with P-Delta Analysis], International Journal of Engineering and Techniques - Volume 7 Issue 6, November 2021.
10. ManikRao and Rajendrakumar S Harsoor, [Effect of P-Delta in Seismic Analysis of Multistorey Buildings], International Journal of Research in Engineering and Technology, Volume: 05 Issue: 11 | Nov-2016.
11. D J Zavala, C J Torres, and J D Moreno, [Influence of the P-delta Effect and Stiffness Irregularity on the Structural Behavior of Reinforced Concrete Buildings], Journal of Physics: Conference Series 2287 (2022) 012047.

Cite This Article :

Ravindra Prajapati, Murlidhar Chourasia, "Seismic Analysis of a G+11 Storey Building Considering Seismic Load As Per Live Data Using ETABS", International Journal of Scientific Research in Civil Engineering (IJSRCE), ISSN : 2456-6667, Volume 8, Issue 1, pp.119-127, January-February.2024
URL : <https://ijsrce.com/IJSRCE24819>